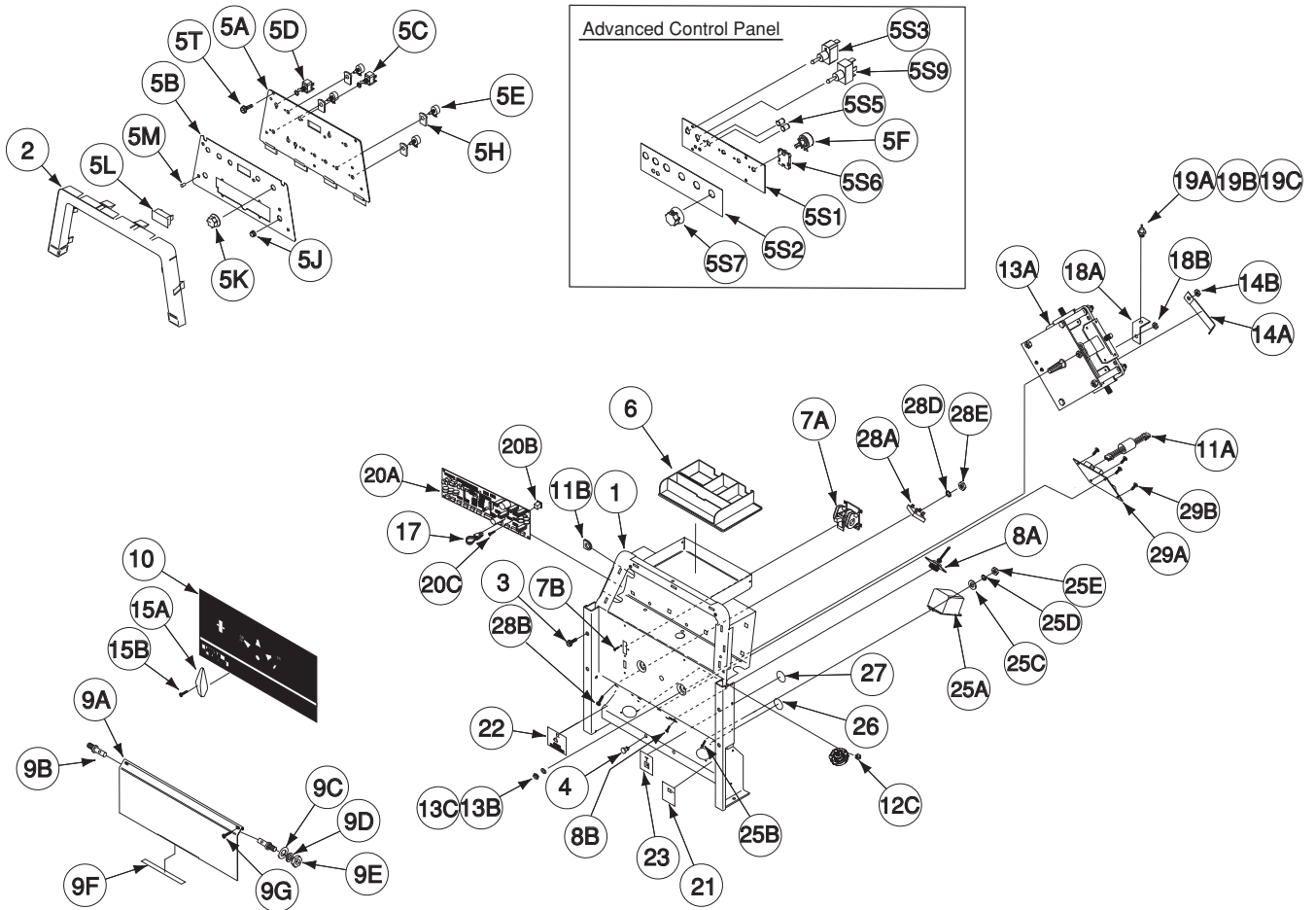


Case Front Assembly



Index of Sub Assemblies
 Part Numbers
 Index of Sub Assemblies
 Part Numbers
 Index of Sub Assemblies
 Part Numbers
 Index of Sub Assemblies
 Part Numbers

Indicates a change this printing.

Use only the parts marked "x" in the column under the heading number called for in the model index page.

ITEM	DESCRIPTION	PART NO.	QTY.	1	2	3	4	5	6	7	8	9
1	Case Front Welded Assembly	G3960	1	X	X	X	X					
2	Top Bezel	G4030	1	X	X	X	X					
3	Thread Forming Screw	S9225-89	4	X	X	X	X					
4	Door Bumper	T14882-1	2	X	X	X	X					
	Control Panel Assembly, Includes:	L11631-1	1	X	•	•	•					
	Control Panel Assembly, Includes:	L11632-1	1	•	X	•	•					
	Control Panel Assembly, Includes:	L12927-1	1	•	•	X	•					
	Control Panel Assembly, Includes:	L12929-1	1	•	•	•	X					
5A	Control Panel	L11603	1	X	•	•	•					
5A	Control Panel	L11737	1	•	X	•	•					
5A	Control Panel	L12926	1	•	•	X	X					
5B	Nameplate (G3994-1 - Part of G3994)	NSS	1	X	•	•	•					
5B	Nameplate (G3996-1 - Part of G3996)	NSS	1	•	X	•	•					
5B	Nameplate (G5670-1 - Part of G5670)	NSS	1	•	•	X	•					
5B	Nameplate (G5672-1 - Part of G5672)	NSS	1	•	•	•	X					
5C	Switch (Display Momentary Toggle Switch)	T10800-49	1	X	X	X	X					
5D	Switch	T10800-4	4	X	X	X	X					
	Control Panel Harness (Not Shown), Includes:	L11709-1	1	X	X	•	•					
	Control Panel Harness (Not Shown), Includes:	L12958-1	1	•	•	X	X					
5E	Potentiometer	T10812-119	4	X	X	X	X					
	Advanced Panel Harness (Not Shown), Includes:	L11714-1	1	•	X	•	•					
	Advanced Panel Harness (Not Shown), Includes:	L12959-1	1	•	•	•	X					
5F	Potentiometer	T10812-119	4	•	X	•	X					
5G	Pushbutton Switch (Not Shown)	T15089-1	1	•	•	X	X					
5H	Potentiometer Spacer	S18280	4	X	•	X	X					
5H	Potentiometer Spacer	S18280	8	•	X	•	•					
5J	Rheostat Control Knob	T13639-3	3	X	•	X	X					
5J	Rheostat Control Knob	T13639-3	7	•	X	•	•					
5K	Rheostat Control Knob	T10491-1	1	X	X	X	X					
5L	Digital Meter	M15480-4	1	X	X	•	•					
5L	Digital Meter	M15893-3	1	•	•	X	X					
5M	LED Lens, Clear, Includes:	S23093-1	5	X	X	X	X					
5N	Retaining "O" Ring (Not Shown)	S23094-1	5	X	X	X	X					
5P	Option Panel (Not Shown)	M19811	1	X	•	•	•					
5P	Option Panel (Not Shown)	M21089	1	•	•	X	•					
5Q	#10-24 HLN (Not Shown)	T9187-13	4	X	•	X	•					
5R	Nameplate (G3994-3 - Part of G3994) (Not Shown)	NSS	1	X	•	•	•					
5R	Nameplate (G5670-3 - Part of G5670) (Not Shown)	NSS	1	•	•	X	•					
5S	Advanced Panel Assembly, Includes:	L12928-2	1	•	•	•	X					
5S1	Option Panel	M21089	1	•	•	•	X					
5S2	Nameplate (G5672-3 - Part of G5672)	NSS	1	•	•	•	X					
5S3	Switch	T10800-4	1	•	•	•	X					
5S4	Advanced Panel Harness (Not Shown), Includes:	L12959-1	1	•	•	•	X					
	Green LED	T13657-3H24	1	•	•	•	X					
	Red LED	T13657-2H24	1	•	•	•	X					
	Potentiometer	T10812-119	4	•	•	•	X					
5S5	LED Lens, Clear (Includes Item 5S8 "O" Ring)	S23093-1	2	•	•	•	X					
5S6	Potentiometer Spacer	S18280	4	•	•	•	X					
5S7	Rheostat Control Knob	T13639-3	4	•	•	•	X					
5S8	Retaining "O" Ring	S23094-1	2	•	•	•	X					
5S9	3 Way Switch	T10800-46	1	•	•	•	X					



Index of Sub Assemblies
 Sub Assembly Illustration
 Index of Sub Assemblies
 Sub Assembly Illustration
 Index of Sub Assemblies
 Sub Assembly Illustration
 Index of Sub Assemblies
 Sub Assembly Illustration

Indicates a change this printing.

Use only the parts marked "x" in the column under the heading number called for in the model index page.

ITEM	DESCRIPTION	PART NO.	QTY.	1	2	3	4	5	6	7	8	9
5T	Thread Forming Screw	S9225-92	2	X	X	X	X					
6	Tool Tray	G3526	1	X	X	X	X					
7A	Switch Assembly	S7670	1	X	X	X	X					
7B	Self Tapping Screw	S8025-115	2	X	X	X	X					
8A	Connector & Lead Assembly	S13100-245	1	X	X	•	•					
8A	Connector & Lead Assembly	S13100-264	1	•	•	X	X					
8B	Self Tapping Screw	S8025-113	2	X	X	X	X					
9A	Door	L11604	1	X	X	X	X					
9B	Pin (Door)	S22921	2	X	X	X	X					
9C	Plain Washer	S9262-30	2	X	X	X	X					
9D	Lock Washer	E106A-14	2	X	X	X	X					
9E	Hex Lock Nut	T9187	2	X	X	X	X					
9F	Decal (Door Warning) (L11672-9 - Part of L11672)	NSS	1	X	X	•	•					
9F	Decal (Door Warning) (L13115-9 - Part of L13115)	NSS	1	•	•	X	X					
9G	Thread Forming Screw	S9225-87	2	X	X	X	X					
10	Nameplate (G3994-2 - Part of G3994)	NSS	1	X	•	•	•					
10	Nameplate (G3996-2 - Part of G3996)	NSS	1	•	X	•	•					
10	Nameplate (G5670-2 - Part of G5670)	NSS	1	•	•	X	•					
10	Nameplate (G5672-2 - Part of G5672)	NSS	1	•	•	•	X					
11A	Plug & Lead Assembly	S18250-774	1	X	X	X	X					
11B	Grommet	S18543-4	1	X	X	X	X					
12A	Output Terminal Molded Assembly	S16656-4	2	X	X	X	X					
12B	Thread Forming Screw (Not Shown)	S9225-88	4	X	X	X	X					
12C	Output Stud Nut	T3960	2	X	X	X	X					
13A	Polarity Switch Assembly	L7390-1	1	X	X	X	X					
13B	1/4-20 HN	CF000017	2	X	X	X	X					
13C	Lock Washer	T9860-6	2	X	X	X	X					
14A	Polarity Switch Jumper	S18234	1	X	X	X	X					
14B	5/16-18 HN	CF000029	1	X	X	X	X					
15A	Handle (Molded)	M15248	1	X	X	X	X					
15B	Thread Forming Screw	S9225-88	1	X	X	X	X					
17	Plug & Lead Assembly (P3 Jumper)	S18250-777	1	X	•	X	•					
17	Plug & Lead Assembly (P7 Jumper)	S18250-776	1	•	X	•	X					
18A	Copper Strap	S11109-14	1	X	X	•	•					
18B	5/16-18 HN	CF000029	1	X	X	X	X					
18C	Plain Washer (Not Shown)	S9262-30	1	X	X	X	X					
18D	Lock Washer (Not Shown)	E106A-14	1	X	X	X	X					
19A	Diode	T12705-67	1	X	X	•	•					
19B	Lock Washer	T9695-1	1	X	X	•	•					
19C	#10-32 HN	CF000011	1	X	X	•	•					
20A	Control P.C. Board Assembly	G3909-[]	1	X	X	•	•					
20A	Control P.C. Board Assembly	G4763-[]	1	•	•	X	X					
20B	Plastic Expansion Nut P.C. Board Standoff	S14020-10	8	X	X	X	X					
20C	Self Tapping Screw	S8025-115	8	X	X	X	X					
21	Decal (Work) (L11672-1 - Part of L11672)	NSS	1	X	X	•	•					
21	Decal (Work) (L13115-1 - Part of L13115)	NSS	1	•	•	X	X					
22	Decal (Stick Electrode) (L11672-2 - Part of L11672)	NSS	1	X	X	•	•					
22	Decal (Stick Electrode) (L13115-2 - Part of L13115)	NSS	1	•	•	X	X					
23	Decal (Remote) (L11672-3 - Part of L11672)	NSS	1	X	X	•	•					
23	Decal (Remote) (L13115-3 - Part of L13115)	NSS	1	•	•	X	X					



Index of Sub Assemblies
 Sub Assembly Illustration
 Index of Sub Assemblies
 Sub Assembly Illustration
 Index of Sub Assemblies
 Sub Assembly Illustration
 Index of Sub Assemblies
 Sub Assembly Illustration