

PARTS LIST FOR

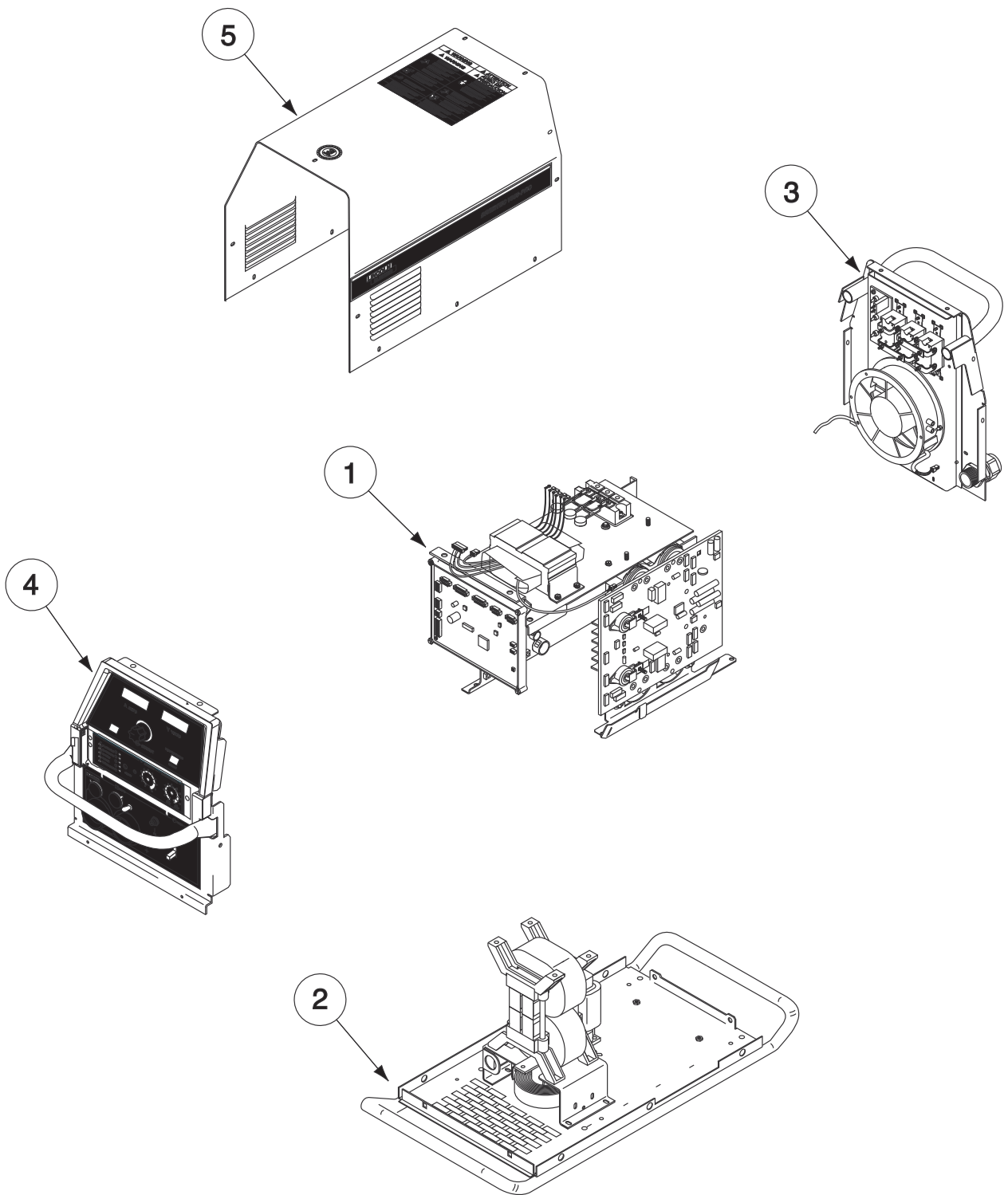
INVERTEC® V350-PRO/PIPE

INVERTEC® V-350 PRO/PIPE



Index of Sub Assemblies
Illustration of Sub Assemblies
Index of Sub Assemblies
Illustration of Sub Assemblies
Index of Sub Assemblies
Illustration of Sub Assemblies
Index of Sub Assemblies
Illustration of Sub Assemblies

ILLUSTRATION OF SUB-ASSEMBLIES



Index of Sub Assemblies

INVERTEC® V350-PRO/PIPE

For Codes: 10873 to 11562

Do Not use this Parts List for a machine if its code number is not listed. Contact the Service Department for any code numbers not listed.

Use the Illustration of Sub-Assemblies page and the table below to determine which sub assembly page and column the desired part is located on for your particular code machine.

↔ Sub Assembly Item No.			1	2	3	4	5		
SUB ASSEMBLY PAGE NAME ↔	Optional Equipment	Miscellaneous Items	Center Panel Assembly	Base Assembly	Case Back Assembly	Case Front Assembly	Wraparound Assembly		
PAGE NO. →	P-401-B.1	P-401-B.2	P-401-C	P-401-D	P-401-E	P-401-F	P-401-G		
CODE NO. ↓									
10873 (Construction)		4	1	1	1	1	1		
10874 (Factory)		1	1	1	1	2	1		
10876 (Advanced Process)		1	1	1	1	3	1		
10875 (CE)		5	1	1	4	4	1		
10934 (Factory-Rack)		3	1	1	3	6	1		
10936 (Pipe)		2	1	1	2	5	2		
11445 (Factory-Rack)		3	1	1	3	6	1		
11481 (Construction)		4	2	1	1	1	1		
11482 (Factory)		1	2	1	1	2	1		

Illustration of Sub Assemblies

INVERTEC® V350-PRO/PIPE

For Codes: 10873 to 11562

Do Not use this Parts List for a machine if its code number is not listed. Contact the Service Department for any code numbers not listed.

Use the Illustration of Sub-Assemblies page and the table below to determine which sub assembly page and column the desired part is located on for your particular code machine.

Sub Assembly Item No. ↔			1	2	3	4	5		
SUB ASSEMBLY PAGE NAME ↔	Optional Equipment	Miscellaneous Items	Center Panel Assembly	Base Assembly	Case Back Assembly	Case Front Assembly	Wraparound Assembly		
PAGE NO. →	P-401-B.1	P-401-B.2	P-401-C	P-401-D	P-401-E	P-401-F	P-401-G		
CODE NO. ↓									
11483 (CE)		5	2	1	4	4	1		
11484 (Advanced Process)		1	2	1	1	3	1		
11485 (Pipe)		2	2	1	2	5	2		
11562		5	2	2	4	4	1		



Illustration of Sub Assemblies

OPTIONAL EQUIPMENT LISTING

Miscellaneous Options Available for your machine are listed below:

Indicates a change this printing.

DESCRIPTION	PART NUMBER
-------------------	-------------

Tig, Gas Control Kit (Not Used on Code 10936)	Order K1762-2
Inverter and Feeder Cart, Large	Order K1764-1
Valet Style Undercarriage	Order K1838-1
Twist-Mate to Lug Adapter	Order K2176-1
Advanced Process Panel Kit (Codes 10873, 10874, 10875)	Order K1763-1



Index of Sub Assemblies

Indicates a change this printing.

Use only the parts marked "x" in the column under the heading number called for in the model index page.

DESCRIPTION	PART NO.	QTY.	1	2	3	4	5	6	7	8	9
Plug & Lead Asbly (J52, P22) (Code 10873)	S18250-766	1	X	•	•	X	•				
Plug & Lead Asbly (J5)	S18250-767	1	X	X	X	X	X				
Plug & Lead Asbly (P22) (Codes 10874 & 10875)	S18250-787	1	X	•	•	•	X				
Plug & Lead Asbly (CE Model) (P22) (Code 10876)	S18250-788	1	•	X	•	•	X				
Plug & Lead Asbly (P9)	S18250-789	1	X	X	X	X	X				
Harness Asbly (Codes 10873, 10874, 10875, 10876) (P4, P41, P42, P43)	M19916	1	X	X	X	X	X				
Harness Asbly (P6, P7, P20, P21, P22, P10A, P10B) (Codes 10874 & 10875, 11445)	M19917	1	X	X	X	•	•				
Harness Asbly (P6, P7, P20, P21, P22, P10A, P10B) (Code 10873)	M19917-1	1	•	•	•	X	•				
Harness Asbly (P6, P7, P20, P21, P22, P10A, P10B) (Code 10876)	M19917-2	1	•	•	•	•	X				
Harness Asbly (Codes 10874, 10875, 11445)	G4063	1	X	•	X	X	•				
Harness Asbly (Code 10876)	G4063-1	1	•	X	•	•	X				

Index of Sub Assemblies

NOTES

Index of Sub Assemblies

Index of Sub Assemblies

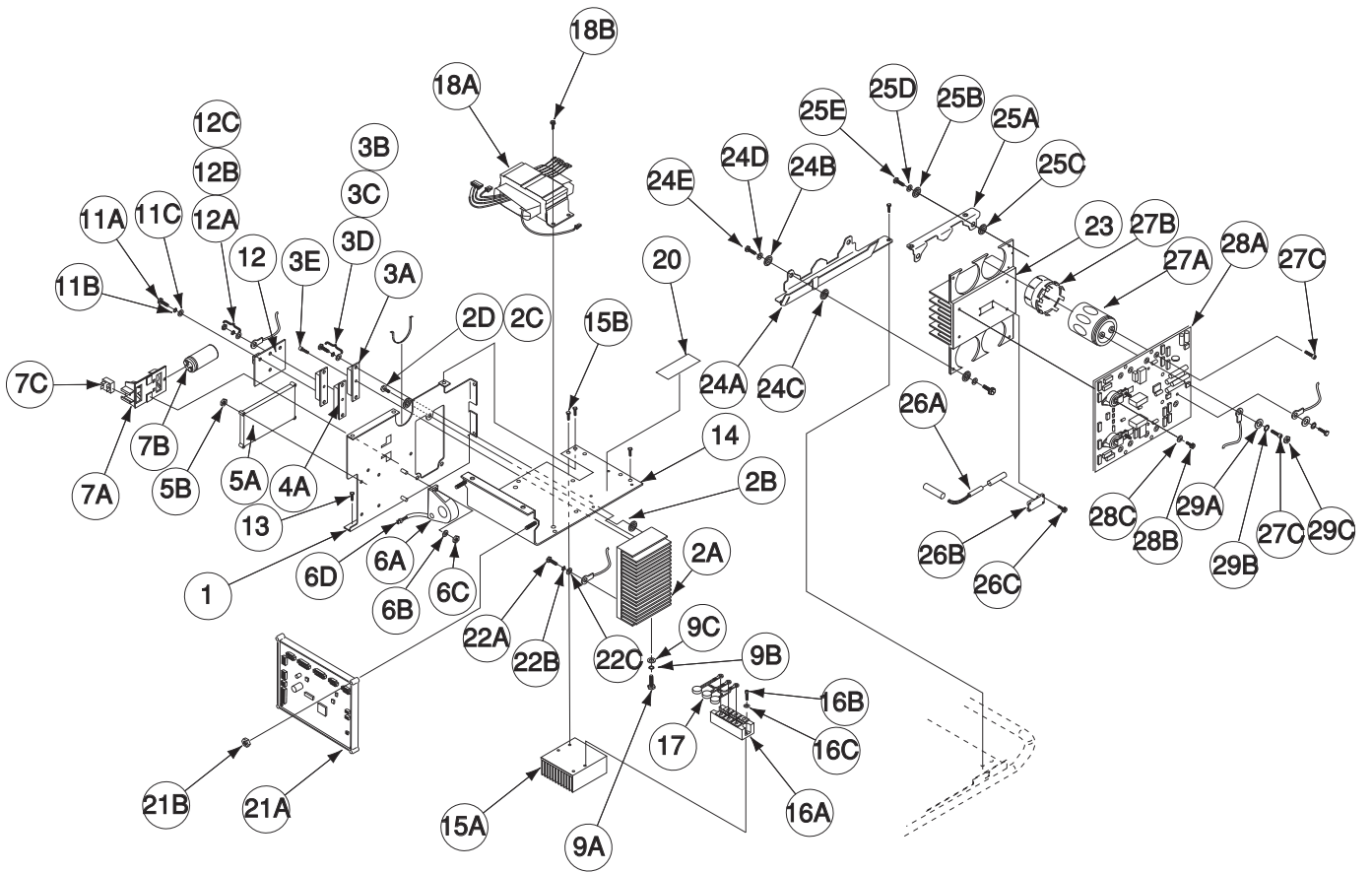
Index of Sub Assemblies

Index of Sub Assemblies

INVERTEC® V-350 PRO/PIPE



Center Panel Assembly



Indicates a change this printing.

Use only the parts marked "x" in the column under the heading number called for in the model index page.

ITEM	DESCRIPTION	PART NO.	QTY.	1	2	3	4	5	6	7	8	9
1	Center Panel - Left	G3603-2	1	X	X							
2A	Output Rectifier Heatsink	M19349	1	X	•							
2B	Insulator	T11267-A	3	X	•							
2C	Insulator	T11267-B	3	X	•							
2D	Thread Forming Screw	S9225-17	3	X	•							
3A	Diode	M15454-9	2	X	•							
3B	1/4-20 x .50 HHCS	CF000012	4	X	•							
3C	Plain Washer	S9262-98	4	X	•							
3D	Spring Washer	T12735	4	X	•							
3E	Socket Head Cap Screw	T9447-21	2	X	•							
4A	Diode	M15454-10	1	X	•							
4B	1/4-20 x .50 HHCS (Not Shown)	CF000012	2	X	•							
4C	Plain Washer (Not Shown)	S9262-98	2	X	•							
4D	Spring Washer (Not Shown)	T12735	2	X	•							
4E	Socket Head Cap Screw (Not Shown)	T9447-21	1	X	•							
5A	Digital Power PC Board Assembly	G3632-[]	1	X	X							
5B	#10-24 HLN	T9187-13	3	X	X							
6A	Current Transducer	S18504-2	1	•	X							
6A	Current Transducer	S18504-6	1	X	•							
6B	#8-32 HN	CF000042	2	X	X							
6C	Lock Washer	T9695-3	2	X	X							
6D	Plug & Lead Asbly, Includes	M19472-4	1	X	X							
7A	Capacitor Mounting Bracket	L9250	1	X	X							
7B	Capacitor	S13490-175	1	X	X							
7C	Diode Bridge	T13637	1	X	X							
9	Flex Lead (Not Shown) (#2 Lead Thru Item 6A)	M5906-216	1	X	X							
9A	5/16-18 x .75 HHCS	CF000040	1	X	X							
9B	Lock Washer	E106A-14	1	X	X							
9C	Plain Washer	S9262-121	1	X	X							
11A	Socket Head Cap Screw	T9447-21	1	X	•							
11B	# 8 Lock Washer	T9695-3	1	X	•							
11C	Plain Washer	S9262-3	1	X	•							
12	Snubber P.C. Board Assembly	M19532-[]	1	X	•							
12A	1/4-28 HJN	CF000060	6	X	•							
12B	Lock Washer	E106A-2	6	X	•							
12C	Plain Washer	S9262-98	6	X	•							
13	Thread Forming Screw	S9225-8	2	X	X							
14	Center Panel	G3603-3	1	X	X							
15A	Input Heatsink	S24574-1	1	X	X							
15B	Thread Forming Screw	S9225-8	3	X	X							
16A	Diode Bridge, 160A, 1600V	M15454-8	1	X	X							
16B	Socket Head Cap Screw	T9447-9	2	X	X							
16C	Spring Washer	T12735-4	2	X	X							
17	MOV Assembly (Not on CE Model)	S18491-1	1	X	X							
18A	Auxiliary Transformer Assembly	L11719	1	X	X							
18B	Thread Forming Screw	S9225-8	3	X	X							
19A	Filter, EMI, 3 Phase, 40A (CE Model Only)(Not Shown)	M18185-4	1	X	X							
19B	#10-24 HLN (CE Model Only) (Not Shown)	T9187-13	3	X	X							
20	Warning Decal (2 Needed on CE Model)	S18469	1	X	X							
21A	Control P.C. Board Assembly	S24832-[]	1	X	X							
21B	#10-24 HLN	T9187-13	2	X	X							

Index of Sub Assemblies
 Sub Assembly Illustration
 Index of Sub Assemblies
 Sub Assembly Illustration
 Index of Sub Assemblies
 Sub Assembly Illustration
 Index of Sub Assemblies
 Sub Assembly Illustration

Indicates a change this printing.

Use only the parts marked "x" in the column under the heading number called for in the model index page.

ITEM	DESCRIPTION	PART NO.	QTY.	1	2	3	4	5	6	7	8	9
22A	Socket Head Cap Screw	T9447-21	1	X	X							
22B	#8 Lock Washer	T9695-3	1	X	X							
22C	Plain Washer	S9262-3	1	X	X							
23	Switch Board Heatsink	L11101	1	X	X							
24A	Heatsink Bracket (Large)	M19412	1	X	X							
24B	Insulator	T11267-A	2	X	X							
24C	Insulator	T11267-B	2	X	X							
24D	Insulating Washer	S10773-77	2	X	X							
24E	Thread Forming Screw	S9225-17	2	X	X							
25A	Heatsink Bracket	S25235	1	X	X							
25B	Insulator	T11267-A	2	X	X							
25C	Insulator	T11267-B	2	X	X							
25D	Insulating Washer	S10773-77	2	X	X							
25E	Thread Forming Screw	S9225-17	2	X	X							
26A	Thermostat	M17192-25	1	X	X							
26B	Thermostat Holder	S24916	1	X	X							
26C	Self Tapping Screw	S8025-62	4	X	X							
27A	Capacitor	S13490-171	4	X	X							
27B	Capacitor Bracket	M19144	4	X	X							
27C	Set Screw	S11604-65	8	X	X							
28A	Switch Board Assembly	G3830-[]	1	X	X							
28B	Socket Head Cap Screw	T9447-9	4	X	X							
28C	Lock Washer	E106A-2	4	X	X							
29A	Plain Washer	S9262-98	4	X	X							
29B	Lock Washer	E106A-2	4	X	X							
29C	1/4-28 HJN	CF000060	4	X	X							
29D	Thermal Interface Pad (Not Shown)	S25347	2	X	X							
30A	Output Rectifier Assembly (Not Shown)	M20551-1	1	•	X							
30B	Insulator (Not Shown)	T11267-A	3	•	X							
30C	1/4-20 x 1.50 HHCS (Not Shown)	CF000141	3	•	X							
30D	Lock Washer (Not Shown)	E106A-2	3	•	X							
30E	Plain Washer (Not Shown)	S9262-98	3	•	X							

Note: When ordering new printed circuit boards indicate the dash number [] of the "Old" board that is to be replaced. This will aid Lincoln in supplying the correct and latest board along with any necessary jumpers or adapters. The dash number brackets [] have purposely been left blank so as to eliminate errors, confusion and updates.

Index of Sub Assemblies
 Sub Assembly Illustration
 Index of Sub Assemblies
 Sub Assembly Illustration
 Index of Sub Assemblies
 Sub Assembly Illustration
 Index of Sub Assemblies
 Sub Assembly Illustration

NOTES

Index of Sub Assemblies

Index of Sub Assemblies

Index of Sub Assemblies

Index of Sub Assemblies

INVERTEC® V-350 PRO/PIPE



Base Assembly

Index of Sub Assemblies

Part Numbers

Index of Sub Assemblies

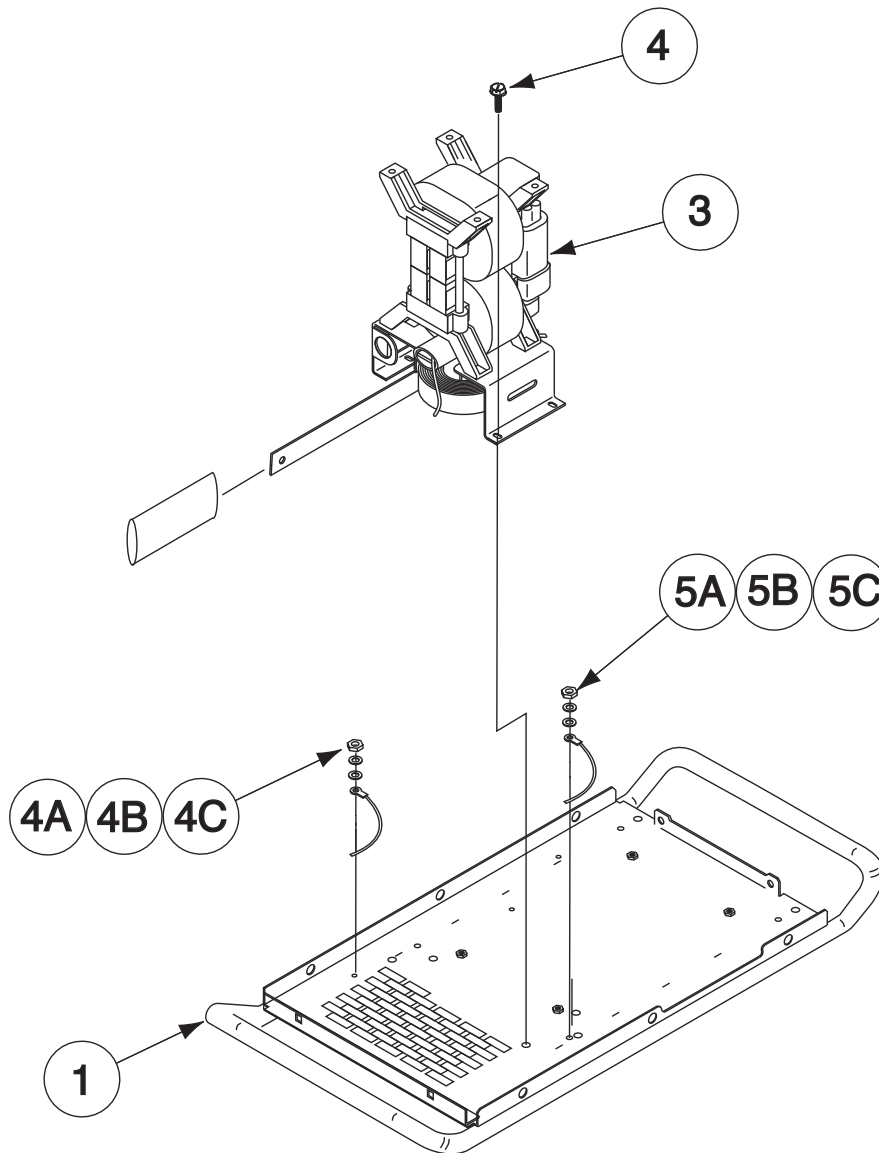
Part Numbers

Index of Sub Assemblies

Part Numbers

Index of Sub Assemblies

Part Numbers



Indicates a change this printing.

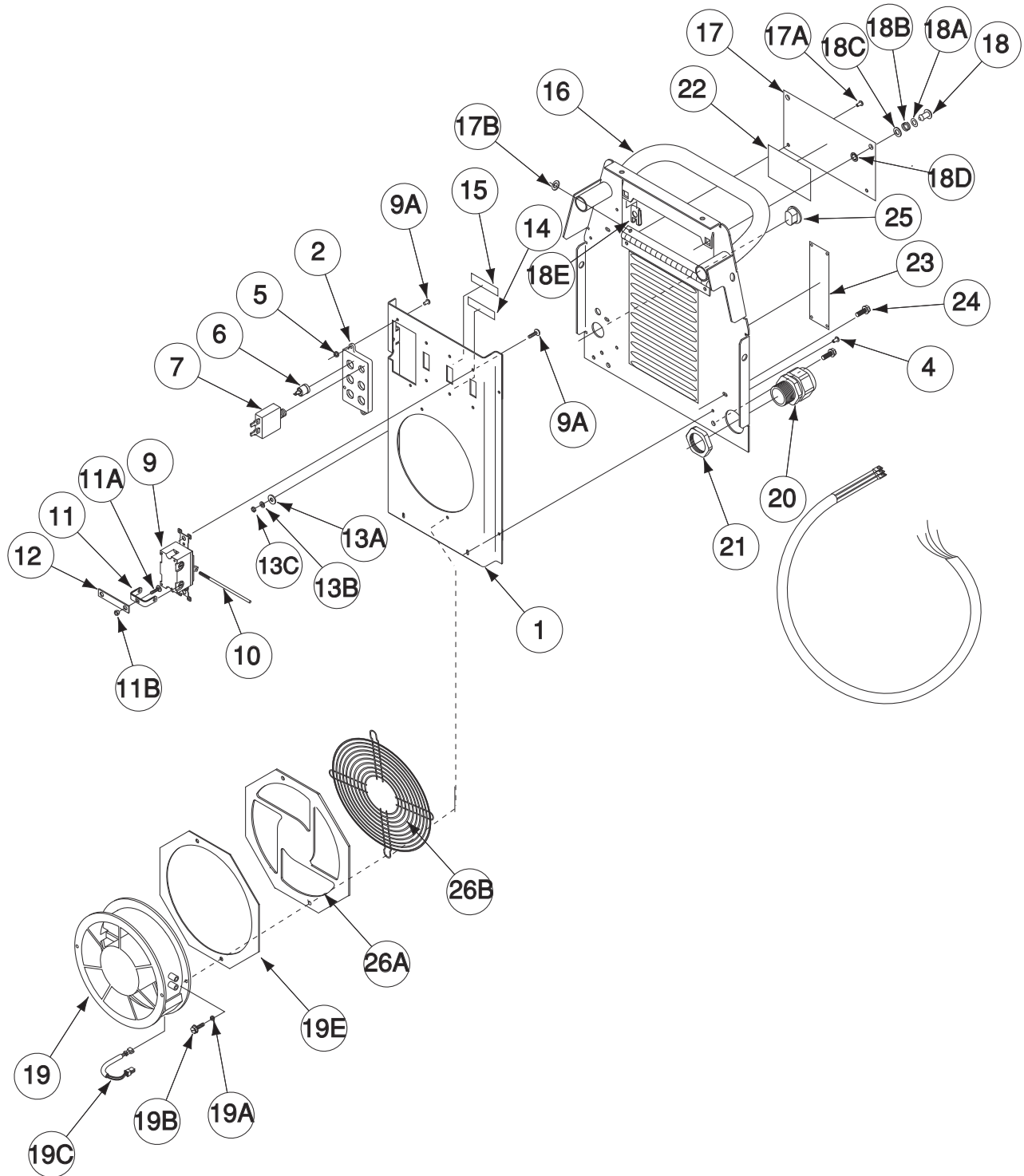
Use only the parts marked "x" in the column under the heading number called for in the model index page.

ITEM	DESCRIPTION	PART NO.	QTY.	1	2	3	4	5	6	7	8	9
1	Base Welded Assembly	M19855	1	X	•							
1	Base Welded Assembly	M19855-2	1	•	X							
3	Transformer & Choke Assembly	L11676	1	X	X							
4	Thread Forming Screw	S9225-8	3	X	X							
4A	Plain Washer	S9262-27	1	X	X							
4B	Lock Washer	E106A-1	1	X	X							
4C	#10-24 HN	CF000010	1	X	X							
5A	Plain Washer	S9262-27	1	X	X							
5B	#10-24 HN	CF000010	1	X	X							
5C	Lock Washer	E106A-1	1	X	X							
5D	Input Lead Asbly, (Not Shown) (Not Used on CE Model)	S18573-10	1	X	•							
5D	Input Lead Asbly (CE Model) (Not Shown)	S24992-5	1	•	X							
6	Toroid Assembly (Not Shown)	S27567	1	•	X							
7A	Carriage Bolt (Not Shown)	T11827-66	1	•	X							
7B	Plain Washer (Not Shown)	S9262-98	3	•	X							
7C	Lock Washer (Not Shown)	E106A-2	3	•	X							
7D	1/4-20 HN (Not Shown)	T10940-5	3	•	X							
8A	Heat Sink Holder (Not Shown)	S22168	1	•	X							
8B	Thread Forming Screw (Not Shown)	S9225-8	1	•	X							
9	Clamp (Not Shown)	S27970	1	•	X							



Index of Sub Assemblies
 Sub Assembly Illustration
 Index of Sub Assemblies
 Sub Assembly Illustration
 Index of Sub Assemblies
 Sub Assembly Illustration
 Index of Sub Assemblies
 Sub Assembly Illustration

Case Back Assembly



Index of Sub Assemblies
 Index of Sub Assemblies
 Index of Sub Assemblies
 Index of Sub Assemblies

Part Numbers
 Part Numbers
 Part Numbers
 Part Numbers

Indicates a change this printing.

Use only the parts marked "x" in the column under the heading number called for in the model index page.

ITEM	DESCRIPTION	PART NO.	QTY.	1	2	3	4	5	6	7	8	9
1	Fan Shroud	M19861	1	X	X	X	X					
2	Reconnect Panel	M19656	1	X	X	X	X					
3	Nameplate (Not Shown) (G4080-10) (Part of G4080)	NSS	1	X	X	X	•					
3	Nameplate (CE) (Not Shown) (G4080-11) (Part of G4080)	NSS	1	•	•	•	X					
3	Nameplate (Not Shown) (G4159-10) (Part of G4159)	NSS	1	•	X	•	•					
4	Rivet	T12584-7	2	X	X	X	X					
5	Plain Washer	S9262-3	2	X	X	X	X					
6	Receptacle	T14530-1	5	X	X	X	•					
6	Receptacle (CE Model)	T14530-1	4	•	•	•	X					
7	Circuit Breaker (3.5A)	T12287-39	1	X	X	X	X					
8	Lead Assembly (Not Shown)	S23008	1	X	X	X	X					
9	Line Switch	S20456	3	X	X	X	X					
9A	Rivet	T12584-7	6	X	X	X	X					
10	Switch Pin	S20322-1	1	X	X	X	X					
11	Reconnect Bus Bar	S20360	6	X	X	X	X					
11A	#10-24 Carriage Bolt	T11827-63	6	X	X	X	X					
11B	#10-24 HN	CF000010	6	X	X	X	X					
12	Lead, Flat Copper	S11012-50	2	X	X	X	X					
13A	Plain Washer (CE Model)	S9262-27	1	•	•	•	X					
13B	Lock Washer (CE Model)	E106A-1	1	•	•	•	X					
13C	#10-24 HN (CE)	CF000010	1	•	•	•	X					
14	Decal (200-230V) (G4080-6) (Part of G4080)	NSS	1	X	•	X	X					
14	Decal (200-230V) (G4159-6) (Part of G4159)	NSS	1	•	X	•	•					
15	Decal (380) (G4080-7) (Part of G4080)	NSS	1	X	•	X	X					
15	Decal (380) (G4159-7) (Part of G4159)	NSS	1	•	X	•	•					
16	Case Back Welded Assembly	M19862	1	X	X	X	X					
17	Access Door	S24576	1	X	X	X	X					
17A	Rivet	T12584-3	2	X	X	X	X					
17B	Plain Washer	S9262-39	2	X	X	X	X					
18	Stud	S24815-1	2	X	X	X	X					
18A	Sealing Washer	S24816-1	2	X	X	X	X					
18B	Ejector Spring	S24817-1	2	X	X	X	X					
18C	Nylon Wear Washer	S24818-1	2	X	X	X	X					
18D	Retainer	S24819-1	2	X	X	X	X					
18E	Receptacle	S24820-1	2	X	X	X	X					
19	Fan	M19076-1	1	X	X	X	X					
19A	Lock Washer	T9695-3	2	X	X	X	X					
19B	Socket Head Cap Screw	T9447-29	2	X	X	X	X					
19C	Plug & Lead Assembly	S18250-643	1	X	X	X	X					
19E	Fan Spacer	S25681	1	X	X	X	X					
20	Box Connector	S19999	1	X	X	X	X					
21	Conduit Nut	T14370-3	1	X	X	X	X					
22	Warning & Reconnect Decal	M19660	1	X	X	X	X					
23	Rear Nameplate	S24579-7	1	X	X	•	•					
23	Rear Nameplate	S24579-6	1	•	•	X	•					
23	Rear Nameplate (CE Model)	S24579-3	1	•	•	•	X					
24	#10-24 .50 HHCS	CF000371	4	X	X	X	X					
25	Plug Button	T10397-22	1	X	X	X	X					
26A	Fan Guard	S25680	1	X	X	X	X					
26B	Wire Guard (Obsolete - use 26A)	S25613	1	•	•	•	•					

Index of Sub Assemblies
 Sub Assembly Illustration
 Index of Sub Assemblies
 Sub Assembly Illustration
 Index of Sub Assemblies
 Sub Assembly Illustration
 Index of Sub Assemblies
 Sub Assembly Illustration

Indicates a change this printing.

Use only the parts marked "x" in the column under the heading number called for in the model index page.

ITEM	DESCRIPTION	PART NO.	QTY.	1	2	3	4	5	6	7	8	9
30	Country of Origin Decal (Not Shown)	S24727-1	1	X	X	X	•					
31	CCC Decal (Not Shown)	T13086-191	1	X	X	X	•					
32	"Crossed Out Wheeled Bin" Symbol (Not Shown)	T13086-201	1	•	•	•	X					



Index of Sub Assemblies
 Sub Assembly Illustration
 Index of Sub Assemblies
 Sub Assembly Illustration
 Index of Sub Assemblies
 Sub Assembly Illustration
 Index of Sub Assemblies
 Sub Assembly Illustration

NOTES

Index of Sub Assemblies

Index of Sub Assemblies

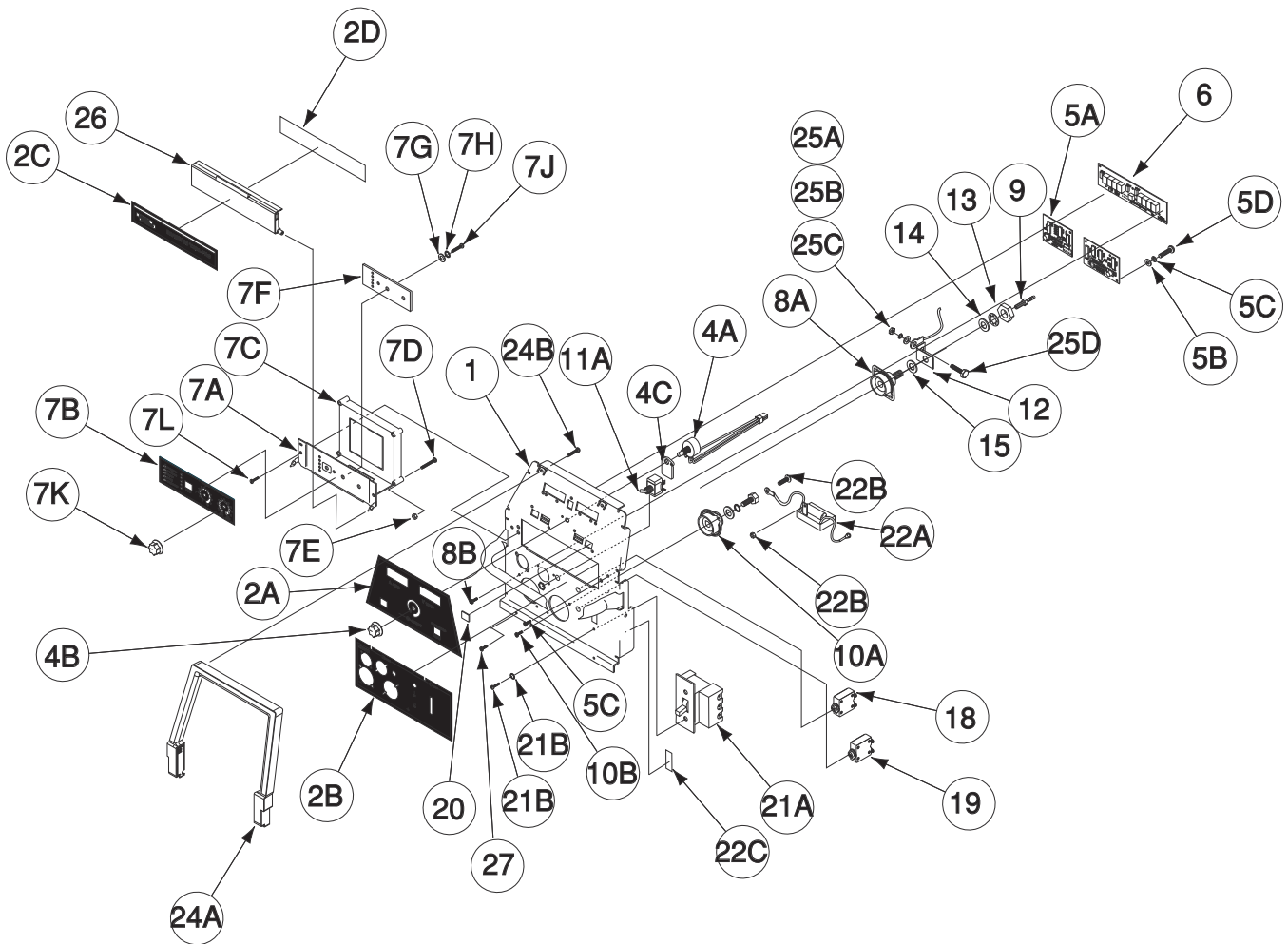
Index of Sub Assemblies

Index of Sub Assemblies

INVERTEC® V-350 PRO/PIPE



Case Front Assembly



Index of Sub Assemblies

Part Numbers

Index of Sub Assemblies

Part Numbers

Index of Sub Assemblies

Part Numbers

Index of Sub Assemblies

Part Numbers

Indicates a change this printing.

Use only the parts marked "x" in the column under the heading number called for in the model index page.

ITEM	DESCRIPTION	PART NO.	QTY.	1	2	3	4	5	6	7	8	9
1	Case Front Welded Assembly	M19866	1	X	X	X	X	X	X			
2A	Nameplate (G4080-1) (Part of G4080)	NSS	1	X	X	X	X	•	X			
2A	Nameplate (G4159-1) (Part of G4159)	NSS	1	•	•	•	•	X	•			
2B	Nameplate	L11769	1	X	•	•	•	•	•			
2B	Nameplate (G4080-3) (Part of G4080)	NSS	1	•	X	X	•	•	•			
2B	Nameplate (G4080-3A) (Part of G4080)	NSS	1	•	•	•	X	•	X			
2B	Nameplate (G4159-3) (Part of G4159)	NSS	1	•	•	•	•	X	•			
2C	Nameplate (G4080-4) (Part of G4080)	NSS	1	X	X	X	X	•	X			
2C	Nameplate (G4159-4) (Part of G4159)	NSS	1	•	•	•	•	X	•			
2D	Decal	S25302	1	X	X	•	X	•	X			
2D	Decal	S25426	1	•	•	•	•	X	•			
2D	Decal	L11770-2	1	•	•	X	•	•	•			
3	Plug & Lead Assembly, (Not Shown)	S18250-769	1	X	X	•	X	•	•			
4A	Plug & Lead Assembly	S18250-770	1	X	X	X	X	X	X			
4B	Knob	T10491	1	X	X	X	X	X	X			
4C	Potentiometer Spacer	S18280	1	X	X	X	X	X	X			
5A	LED PC Board Assembly	M19875-[]	2	X	X	X	X	X	X			
5B	Plain Washer	S9262-97	4	X	X	X	X	X	X			
5C	Lock Washer	E106A-13	4	X	X	X	X	X	X			
5D	#6-32 x .50 PPHS	CF000338	4	X	X	X	X	X	X			
6	Standard Display Board Assembly	L11130-[]	1	X	X	X	X	X	X			
7	Mode Assembly, Includes:	M19935	1	X	X	•	X	•	X			
7	Mode Assembly, Includes:	M19935-2	1	•	•	•	•	X	•			
7A	Mode Panel	M19871	1	X	X	•	X	X	X			
7B	Nameplate (G4080-2) (Part of G4080)	NSS	1	X	X	•	X	•	X			
7B	Nameplate (G4159-2) (Part of G4159)	NSS	1	•	•	•	•	X	•			
7C	Remote/Status PC Board Assembly	G4018-[]	1	X	X	•	X	X	X			
7D	#10-24 x 1.00 RHS	CF000038	2	X	X	•	X	X	X			
7E	#10-24 HLN	T9187-13	2	X	X	•	X	X	X			
7F	Mode PC Board	M19874-[]	1	X	X	•	X	X	X			
7G	Plain Washer	S9262-97	1	X	X	•	X	X	X			
7H	Lock Washer	E106A-13	1	X	X	•	X	X	X			
7J	#6-32 x .50 SPHS	CF000338	1	X	X	•	X	X	X			
7K	Control Knob	T13639-5	2	X	X	•	X	X	X			
7L	#10-24 x .50 HHCS	CF000371	2	X	X	•	X	X	X			
7M	Button Cover (Not Shown)	S23055	1	X	X	•	X	X	X			
7	Advanced Process Panel Assembly, Includes:	M19915	1	•	•	X	•	•	•			
7A	Advanced Process Panel (Not Shown)	L11713	1	•	•	X	•	•	•			
7B	Nameplate (Not Shown)	L11770-1	1	•	•	X	•	•	•			
7C	Advanced Process Panel PC Board (Not Shown)	NSS	1	•	•	X	•	•	•			
7D	Plain Washer (Not Shown)	S9262-97	3	•	•	X	•	•	•			
7E	Lock Washer (Not Shown)	E106A-13	3	•	•	X	•	•	•			
7F	#6-32 x .50 SPHS (Not Shown)	CF000338	3	•	•	X	•	•	•			
7G	Remote/Status PC Board Asbly (Not Shown)	G4018-[]	1	•	•	X	•	•	•			
7H	#10-24 x 1.00 RHS (Not Shown)	CF000038	2	•	•	X	•	•	•			
7J	#10-24 HLN (Not Shown)	T9187-13	2	•	•	X	•	•	•			
7K	Control Knob (Not Shown)	T13639-3	2	•	•	X	•	•	•			
7L	Plug & Lead Assembly (Not Shown)	S18250-667	1	•	•	X	•	•	•			
7M	Screw Lock Nut Kit (Not Shown)	S18976-1	1	•	•	X	•	•	•			
7N	Button Cover	S23055	2	•	•	X	•	•	•			



Index of Sub Assemblies
 Sub Assembly Illustration
 Index of Sub Assemblies
 Sub Assembly Illustration
 Index of Sub Assemblies
 Sub Assembly Illustration
 Index of Sub Assemblies
 Sub Assembly Illustration

Indicates a change this printing.

Use only the parts marked "x" in the column under the heading number called for in the model index page.

ITEM	DESCRIPTION	PART NO.	QTY.	1	2	3	4	5	6	7	8	9
8A	Output Terminal Molding, Includes 8C (Below Code 11440)	M13896-7	1	X	X	X	X	X	X			
8A	Output Terminal Molding, (Above Code 11440)	M13896-9	1	•	•	•	•	•	X			
8B	Thread Forming Screw	S9225-63	2	X	X	X	X	X	X			
8C	"O" Ring (Not Shown)	T13483-34	1	X	X	X	X	X	X			
9	Barbed Hose Fitting	T14557-8	1	X	X	X	X	X	X			
10A	Output Terminal Molding, (Below Code 11440)	M13896-3	1	X	X	X	X	X	X			
10A	Output Terminal Molding, (Above Code 11440)	M13896-9	1	•	•	•	•	•	X			
10B	Thread Forming Screw	S9225-63	2	X	X	X	X	X	X			
11A	Toggle Switch	T13562	1	•	X	X	X	X	X			
11B	Sealing Boot (Not Shown)	S22061-4	1	•	•	•	X	•	X			#
12	Rectifier Bracket Arm (Below Code 11440)	T11655-8	1	X	X	X	X	X	X			
12	Rectifier Bracket Arm (Above Code 11440)	T11655-9	1	•	•	•	•	•	X			
13	5/8-11 HN (Below Code 11440)	CF000140	1	X	X	X	X	X	X			
13	1/2-13 x .750 HHCS (Above Code 11440)	CF000020	1	•	•	•	•	•	X			
14	Plain Washer	S9262-41	1	X	X	X	X	X	X			
15	Lock Washer (Internal Shake)	T9695-16	1	X	X	X	X	X	X			
16	Button Cover (Not Shown)	S23055	2	X	X	X	X	X	X			
17	Plug Button (Not Shown)	T10397-3	1	X	•	•	•	•	•			
18	Circuit Breaker (10.0A)	T12287-20	1	•	X	X	X	X	X			
18A	Sealing Boot (Not Shown)	S22061-3	1	•	•	•	•	•	X			
19	Circuit Breaker (3.5A)	T12287-39	1	•	X	X	X	X	X			
19A	Sealing Boot (Not Shown)	S22061-2	1	•	•	•	•	•	X			
20	Button Cover	S23055	2	•	X	X	X	•	•			
21A	Switch	S20030-1	1	X	X	X	X	X	X			
21B	Lock Washer	T9695-1	2	X	X	X	X	X	X			
21C	#10-32 x .50 PPHS (Not Shown)	CF000373	2	X	X	X	•	X	•			
21C	#10-32 x .625 PPHS (Not Shown)	CF000084	2	•	•	•	X	•	X			
21D	Weatherproof Cover (Not Shown)	S25384	1	•	•	•	X	•	X			
21E	Line Switch Spacer (Not Shown)	S27237	1	•	•	•	X	•	X			
22A	Noise Suppressor Assembly	S25304	1	X	X	X	X	X	X			
22B	#10-24 HLN	T9187-13	1	X	X	X	X	X	X			
22C	Decal (G4080-5) (Part of G4080)	NSS	1	X	X	X	X	•	X			
22C	Decal (G4159-5) (Part of G4159)	NSS	1	•	•	•	•	X	•			
24A	Bezel	G4041	1	X	X	X	X	X	X			
24B	Self Tapping Screw	S8025-91	1	X	X	X	X	X	X			
24C	Shakeproof Lock Washer (Not Shown)	T9695-1	1	•	•	•	•	X	•			
25A	Lock Washer	E106A-14	1	X	X	X	X	X	X			
25B	Plain Washer	S9262-121	1	X	X	X	X	X	X			
25C	5/16-18 HN	CF000029	1	X	X	X	X	X	X			
25D	5/16-18 HHCS	CF000062	1	X	X	X	X	X	X			
26	Door	L11721	1	X	X	X	X	X	X			
27	#10-24 x .50 HHCS	CF000371	2	X	X	X	X	X	X			
28	D Shell Cap (Not Shown)	S25241	1	•	•	X	X	•	•			

Note: When ordering new printed circuit boards indicate the dash number [] of the "Old" board that is to be replaced. This will aid Lincoln in supplying the correct and latest board along with any necessary jumpers or adapters. The dash number brackets [] have purposely been left blank so as to eliminate errors, confusion and updates.

Index of Sub Assemblies
Sub Assembly Illustration
Index of Sub Assemblies
Sub Assembly Illustration
Index of Sub Assemblies
Sub Assembly Illustration
Index of Sub Assemblies
Sub Assembly Illustration

NOTES

Index of Sub Assemblies

Index of Sub Assemblies

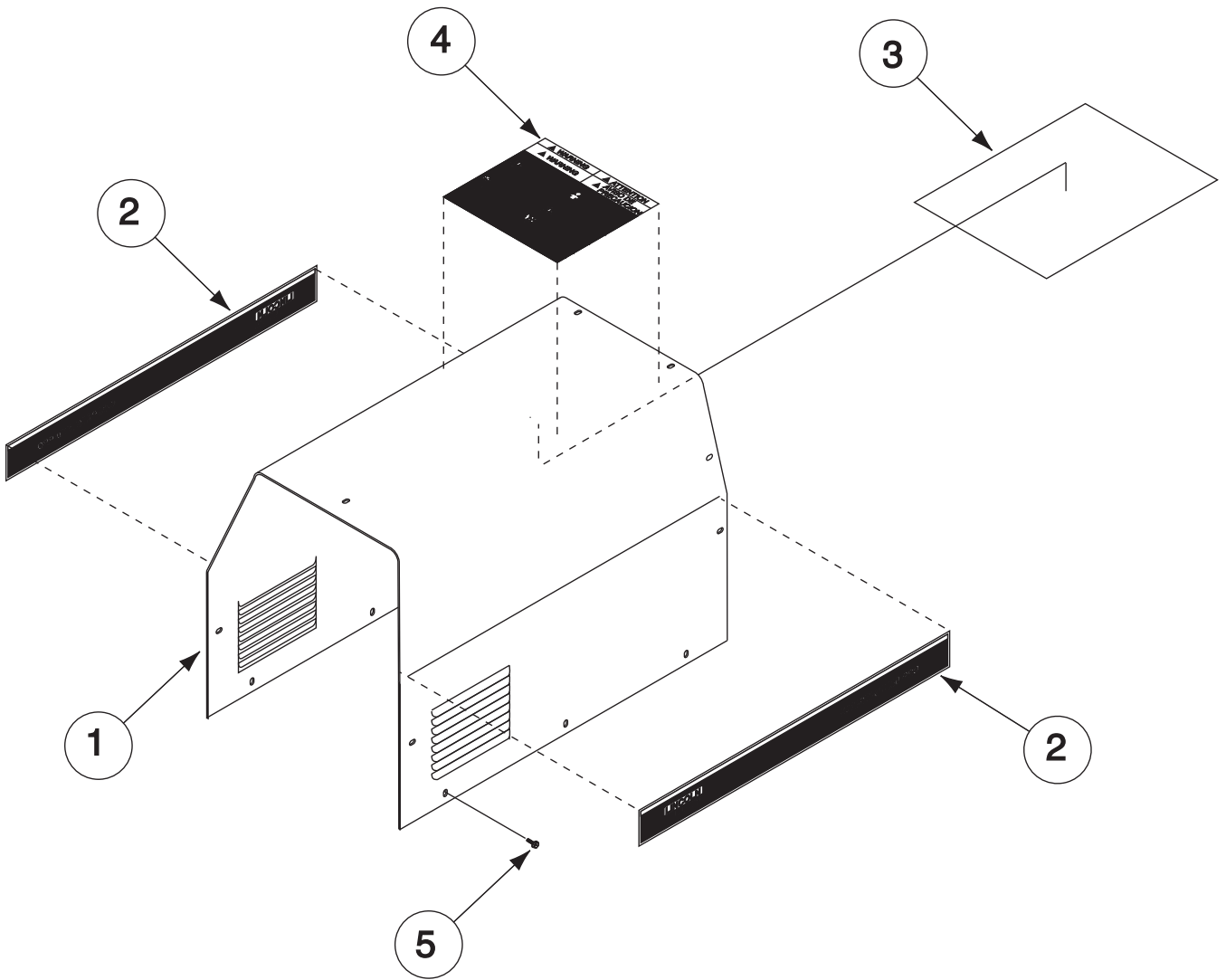
Index of Sub Assemblies

Index of Sub Assemblies

INVERTEC® V-350 PRO/PIPE



Wraparound Assembly



Index of Sub Assemblies

Part Numbers

Index of Sub Assemblies

Part Numbers

Index of Sub Assemblies

Part Numbers

Index of Sub Assemblies

Part Numbers

Indicates a change this printing.

Use only the parts marked "x" in the column under the heading number called for in the model index page.

ITEM	DESCRIPTION	PART NO.	QTY.	1	2	3	4	5	6	7	8	9
1	Wraparound	L11664	1	X	•							
1	Wraparound	L11664-2	1	•	X							
2	Side Decal (Right & Left)	L11115	1	X	•							
2	Side Decal (Right & Left)	L11804	1	•	X							
3	Wiring Diagram	G4082	1	X	•							
3	Wiring Diagram	G4208	1	•	X							
4	Warning Decal	L8064-1	1	X	X							
5	#10-24 x .50 SHWHS	CF000371	18	X	X							



Index of Sub Assemblies
 Sub Assembly Illustration
 Index of Sub Assemblies
 Sub Assembly Illustration
 Index of Sub Assemblies
 Sub Assembly Illustration
 Index of Sub Assemblies
 Sub Assembly Illustration

NOTES

Index of Sub Assemblies

INVERTEC® V-350 PRO/PIPE

